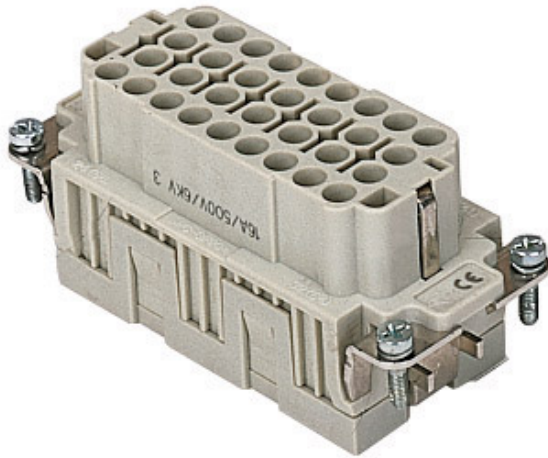



Part number


CQEF 32 N



Brief description:

female insert, 64 poles + PE (2x32 poles + PE, No. 33 - 64), crimp connections, 16A 500V, 6kV, 3, size "77.62", CLASS insert series

Product description	
Model	female insert
Version	crimp connections
Series	CQE
Product type	for female contacts 16A
Family	CLASS inserts
Size	size "77.62"
N. of poles	64 poles +  (2 inserts)
Technical data	
Current	16 A (A.C. and D.C.)
Voltage	500 V
Rated impulse withstand voltage	6kV
Pollution degree	3
Operating temperature range (min, max)	-40°C ... +125°C
Mating cycles	≥ 500
IP degree of protection	IP20 without enclosure, IP65/IP66 with enclosure
PE wire cross-section	0,14 - 4 mm ² ; AWG 20 - 12
Further technical details	
Characteristics according to EN 61984	16A 500V 6kV 3; 16A 830V 8kV 2
Insulation resistance	≥ 10 GΩ
Rated voltage according to UL/CSA	600V
UL 94 flammability rating	V-0
Weight	65,00 g

Approvals / Standards	
Reference standard	EN 61984 (2001-11)
Quality mark	 , EAC
Conformity	CQC, CE
General ordering information	
EAN13 code	8015747037105
Tariff number	85369095
Country of origin	Made in EU (IT)
ETIM classification	EC000438
Packaging Information	
Sub-packaging weight	0,33 kg
Sub-packaging description	Carton
Sub-packaging quantity	5 Pcs
Sub-packaging EAN barcode	8015747037112

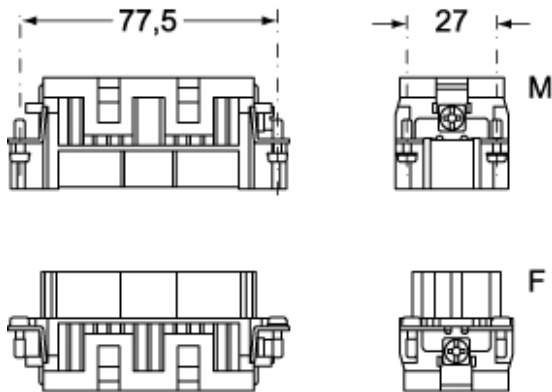
Part number

CQEF 32 N

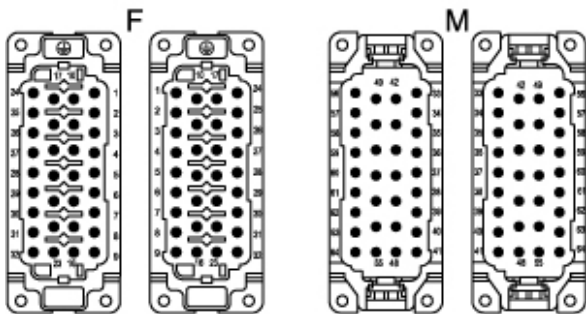


Catalogue drawings

CQEM

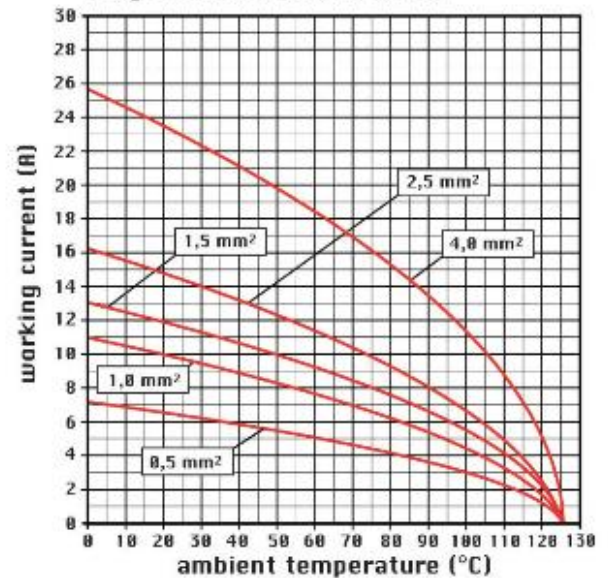


CQEF



Catalogue drawings

diagram CQE 32 and 64 poles



Notes

CQEF/M 32 N inserts:

- characteristics according to EN 61984:

(16A 500V 6kV 3)

(16A 830V) 8kV 2)

- rated voltage according to UL/CSA: 600V

- insulation resistance: > 10 GOhm

- ambient temperature limit: -40 °C ... +125 °C

- are made of self-extinguishing thermoplastic resin

UL 94 V0

- mechanical life: > 500 cycles

- contact resistance: < 1 mOhm

- for contact crimping instructions, please see the crimping tool section (16A contacts, CCF, CCM and CC...AN series) .

- enclosures: size "77.62":

C-TYPE IP65/IP66

C7 IP67 stainless steel lever

V-TYPE IP65/IP66

stainless steel lever

T-TYPE IP65 insulating

JEI zinc-plated steel lever

BIG hoods

W-TYPE aggressive environments

EMC

central lever

IP68

panel supports: page:COB